

# ANDÚJAR

## Natural Park Sierra de Andújar

Public Use Map



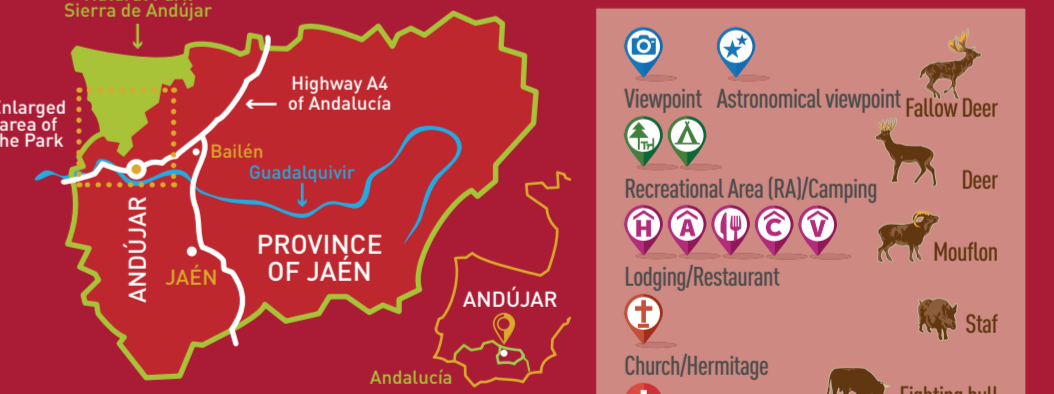
**Natural Park Sierra de Andújar** Location Northwest corner of the province of Jaén, in the middle of Sierra Morena. Extension 74.774 Has. Municipality Andújar, Villanueva de la Reina, Baños de la Encina and Marmolejo. Population 53.296 Hab. Altitude Between 200 and 1290 meters of Sierra Quintana. Ecosystem Meadows and Forests (Oaks, Pyrenean oaks and Cook oaks) and Mediterranean vegetation (Rockrose, Mastic and Strawberry tree). Fauna Wolf, Iberian lynx, Mongoose, Otter, Iberian imperial eagle, Golden eagle, Black vulture, Eagle owl, Black stork, Boar, Fallow deer, Mouflon and Deer. Livestock Fighting bulls, Beekeeping.



**Protection** The Natural Park of Sierra de Andújar was declared by Law 2/89 on 18 July, approving the *Inventory of Andalusian Natural Protected Areas* y down additional measures for their protection. Is part of the *Red Natura 2000* as ZEC with designation ES6160006 Sierra de Andújar and is designated as ZEPA as a consequence of the implementation of the *Birds Directive (Directive Aves)*. Within the borders of the Natural Park are the Mounts Lugar Nuevo and Selladores-Contadero, managed by the *Autonomous Organization for National Parks*, of the Ministry of Agriculture, Fishery, Food and Environment. A part of the territory of the Sierra de Andújar, and not just within the administrative limits of the natural park, is included in the *Red Natura 2000* within ZEC ES6160008 Cuencas del Rumbalar, Guadalén y Guadalmena.



Plan updated to May 2020. Printed on recycled paper. Free broadcast material. Prohibited its sale and its diffusion without the permission of Tourism of the City council of Andújar.



	Viewpoint		Astronomical viewpoint		Fallow Deer
	Recreational Area (RA)/Camping		Deer		Mouflon
	Lodging/Restaurant		Stag		Fighting bull
	Church/Hermitage		Iberian Lynx		Wolf
	Hospital		Otter		Mongoose
	Information		Iberian Imperial Eagle		Golden Eagle
	Petrol station		Black Vulture		Birdlife
	Bus station/Train				

ROUTES and PATHS
   
[turismodeandujar.com](http://turismodeandujar.com)

Natural Park APP for mobile!
   
 Free download from
   
[Playstore](#) and [App Store](#)

Download on the
   
[App Store](#)

Google play
   
 ANDÚJAR AYUNTAMIENTO TURISMO
   
 500 m 1 km
   
 Approximate scale: 1/80.000

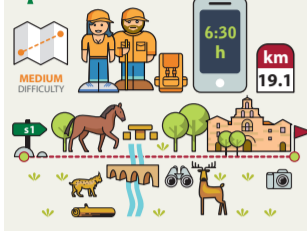


## R1 Tourist route The Pilgrim Path

**Modality** Hiking, horseback and mountain bike route with a hard stretch.  
**Length** 19.1 Km (one-way trip).  
**Access** From Andújar, take the Camino de San Amancio (Path of San Amancio) as start point that links with Camino del Santuario (Sanctuary Path).  
**Interesting points**  
Panoramic viewpoints of Comarca de la Campiña - San Ginés Rest Area, pilgrims shelter and viewpoint - Viewpoint and Pilgrim memorial - Mount Lugar Nuevo (National Park) - Jándula River - Roman Routes sections - Virgen de la Cabeza's Sanctuary.

### PATH OF THE ROUTE 1

#### S1 Camino Viejo Santuario



**LOW DIFFICULTY**  
6:30 h  
19.1 km

It runs along the "Cordel de los Molinos" that was declared of National Touristic Interest. We can reach the first rest area, San Ginés, walking through a narrow upward lane. From there, walking through an easier path, we find the Mount Lugar Nuevo (National Park), where the Natural Park Sierra de Andújar begins. Further ahead, we cross the Jándula river over a 17th century bridge and continue walking until reaching the hardest rise of the path to the Sanctuary settlement where Virgen de la Cabeza's Pilgrimage is celebrated every last April weekend.

## R2 Andújar - Virgen de la Cabeza Sanctuary

**Modality** Vehicle and/or mountain bike road.  
**Length** 32 Km (one-way trip).  
**Access** Road A-6177 (Del Val hotel).  
**Interesting points**  
Viñas de Peñallana - Sierra de Andújar Natural Park Visitor Centre, Viñas de Peñallana - Viewpoint "El Peregrino" - Jándula River - Jabalí Recreation Area - Coscojar's Viewpoint - Virgen de la Cabeza Sanctuary.

### PATHS OF THE ROUTE 2

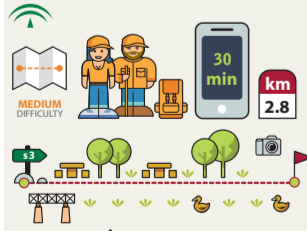
#### S2 Zumacares



**MEDIUM DIFFICULTY**  
60 min  
2.4 km

Zumacares' property can be accessed via the 10.300 km of road A-6177. At the end of the lane of approximately 500 m we find an ancient farmhouse yet to be enabled as public use equipment. You can do this route on foot or riding a mountainbike. It runs along pine groves, granite rocks and lavender stands.

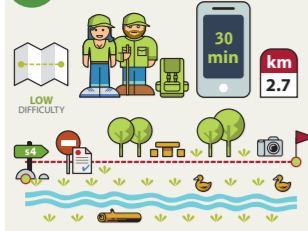
#### S3 El Encinarejo



**MEDIUM DIFFICULTY**  
30 min  
2.8 km

It is located around the Jándula River banks, alongside the forest track. It starts on the Steel Bridge (Puente de Hierro), main entrance to the Natural Park, and it goes down the right bank of the river course, going through a recreational area. Along its shore, we reach the dam of the Encinarejo reservoir bottom. Crossing through a bridge located below the dam is necessary in order to get to the other shore, where we can appreciate the Encinarejo's village.

## S4 La Recta



**LOW DIFFICULTY**  
30 min  
2.7 km

Section of little difficulty located along the Jándula River and the forest track. It starts at the gates of Mount Lugar Nuevo (National Park). It is necessary to request authorisation from the Natural Park Office at least 15 days in advance. It connects with the Lugar Nuevo-Santuario section.

## S5 Jabalí - Encinarejo



**MEDIUM DIFFICULTY**  
1:10 h  
3.2 km

It starts in the Jabalí Recreative Area placed on km 27 of the road A-6177. It starts on a firebreak alongside the road. After crossing the road, we pass through a fence located about 800 meters away. 400 meters ahead, we find another junction, we leave the firebreak and pass along a path on our right. We walk through a cleared forest until we reach the thalweg of a stream that flows into the Jándula River. We go down the River and a kilometre away we will find firebreaks that cross to the Jándula River, about 200 metres ahead.

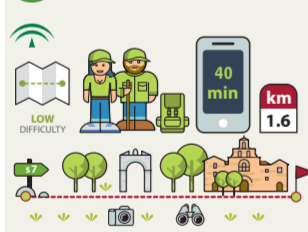
## S6 Jabalí - Coscojar viewpoint



**LOW DIFFICULTY**  
0:20 h  
0.7 km

A brief hike that will lead us to the Coscojar's Viewpoint. We start walking from the Jabalí Recreative Area towards the forest track. If we take the track towards the South alongside the A-6177 road, it will lead us to the viewpoint mentioned above.

## S7 Sanctuary



**LOW DIFFICULTY**  
40 min  
1.6 km

A brief walk around the Cabezo Hill that starts one kilometre before arriving to the Santuario's intersection. We start in a cove of stone pines and move towards the Huerta de los Frailes where we can see the Jándula River Valley as it passes through Lugar Nuevo, and conclude reaching the stone road that lead to the Sanctuary.

## S8 Sanctuary-Jabalí



**MEDIUM DIFFICULTY**  
45 min  
2 km

From the Cabezo Hill area to the Jabalí Recreational Area. It starts at the forest track, taking the right detour that passes through a path that runs through an old sheep pen until it crosses the forestall track Membrillojo. During the descent, we can see the Encinarejo Reservoir and the road to Andújar and to Puertollano, until reaching the end of the tour.

## R3 Circular Route Sanctuary

**Modality** Hiking, horseback and mountain bike route with a hard stretch.  
**Length** 18 Km. (6 hours).  
**Description** It is the connection of several paths. s3 and s4 link through the forest track parallel to the road or taking the road's ditch over 200 metres. Previous authorisation is required for s4 path.

### PATHS OF THE ROUTE 3

S1c S7 S8 S5 S3 S4

## R4 North route to Sierra Quintana

**Length** 49 Km.  
**Access** A-6177 y A-6178.  
**Interesting points**  
Sierra de Andújar Natural Park Visitor Centre, Viñas de Peñallana - Pilgrim Viewpoint - Jándula River - El Jabalí Recreational Area - Coscojar Viewpoint - Mongoramos viewpoint (Astronomical Viewpoint Starlight Reserve), Tamujar Viewpoint and Valmayor River Viewpoint.

### PATH OF THE ROUTE 4

#### S9 El Junquillo



**LOW DIFFICULTY**  
2:00 h  
5.8 km

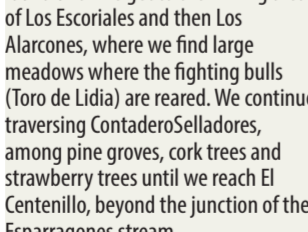
You can access through A-6177 and A-6178 roads, towards Puertollano. The start sign is 19 km away in a road junction that branches it to the left towards Valdelagrana. It runs among oak groves and meadows and, at its end, we can distinguish Sierra Quintana, where we find the park's highest peak, Burcio de Pino (1,291 m). This path connects with a path, only accessible on horseback, on foot or by fourwheeldrive vans, that leads to Fuencaliente.

## R5 Route of the Brave Bull

**Modality** Fourwheel-drive van and bike. The most part of the path is unpaved.  
**Length** 86 Km., till the Centenillo.  
**Access** A-6177 Road, detour on km 14.200. A-6100, towards La Carolina.  
**Interesting points**  
Viñas de Peñallana - Escoriales, livestock of fighting bulls area - ContaderoSelladores Mountains (National Parks, MAFF) - Centenillo, old mining town - Los Alarcones and Los Pastores (the Shepherds) Viewpoint - Recreational Area La Aliseda.  
**Description**  
We take the regional road JH-5003 (km 15.200 of A-6177) from Viñas de Peñallana to reach ContaderoSelladores. We descend through the Mediterranean landscape and native fauna until we get to the mining area of Los Escoriales and then Los Alarcones, where we find large meadows where the fighting bulls (Toro de Lidia) are reared. We continue traversing ContaderoSelladores, among pine groves, cork trees and strawberry trees until we reach El Centenillo, beyond the junction of the Esparragones stream.

### PATHS OF THE ROUTE 5

#### S10 Paths of the Cuatro Términos (The Four Municipal Borders)



**LOW DIFFICULTY**  
1:20 h  
4 km



**LOW DIFFICULTY**  
1:20 h  
4 km

It leads to a hill where 4 municipal districts borders come together: Andújar, Villanueva de la Reina and Baños de la Encina in Jaén; and Mestanza, in Ciudad Real. It's a mountainous land that begins on an



upcoming path of 350 m that connects with a firebreak of 150 m. We reach the bottom of a rocky ground that is a mix between a Mediterranean forest and a juniper forest placed on quartzite, close to the Collado de Selladores. We move forward through the forest track during 2.5 km, and finally, we go up through a path to the bottom of the top of the Four Municipal Districts Border (Puntal de los Cuatro Términos) from where we can appreciate some exceptional panoramic views.

## S11 El Centenillo-Cerrillo del Plomo



**MEDIUM DIFFICULTY**  
40 min  
1.1 km



**MEDIUM DIFFICULTY**  
50 min  
1.7 km

Circular path that runs through the old Mining Railroad, and that brings us close to the Pozo Nuevo mine, where we can find a viewpoint.

## R6 Rumblar Reservoir Baños de la Encina

**Length** 45 Km. (one-way).  
**Access** A-6177 Road (detour in km 15.2 approximately), take JH-5002 and then take the detour in approximately km 10 at JV-5041 towards the Rumblar Reservoir-Baños de la Encina.  
**Interesting points**  
Viñas de Peñallana - Escoriales - Friscalejo - Del Rumblar Reservoir - Baños de la Encina - Dam viewpoint.

### PATHS OF THE ROUTE 6

#### S13 Del Rumblar



**MEDIUM DIFFICULTY**  
5:40 h  
15.5 km



**MEDIUM DIFFICULTY**  
2:00 h  
6.4 km

Some meters ahead the Escoriales intersection we take a path on our right towards the Rumblar Reservoir. We will find the entrance of a path that apparently gives access to a house; we need to pass it by and then turn left. From this point to the Reservoir, we have to turn left in every intersection.

## R7 Jándula Reservoir La Lancha

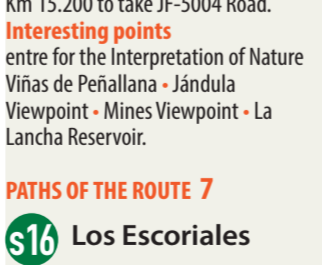
**Length** 35 Km. (one-way trip).  
**Access** A-6177 Road, take a detour at Km 15.200 to take JF-5004 Road.  
**Interesting points**  
Viñas de Peñallana - Jándula Viewpoint - Mines Viewpoint - La Lancha Reservoir.

### PATHS OF THE ROUTE 7

#### S16 Los Escoriales



**LOW DIFFICULTY**  
2:00 h  
6.4 km



**LOW DIFFICULTY**  
2:00 h  
6.4 km

It starts at the ancient mining enclave that can be accessed via JH-5002. It begins at a junction of this road, alongside a bull pen, through an unpaved path, JF-5004. We can appreciate a landscape with meadows along with a thicker Mediterranean

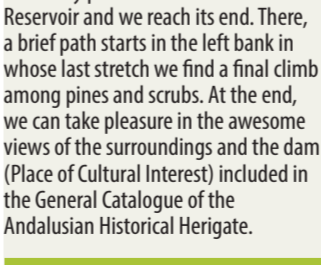
## S15 El Bronce



**MEDIUM DIFFICULTY**  
3:00 h  
9 km



**MEDIUM DIFFICULTY**  
3:00 h  
9 km



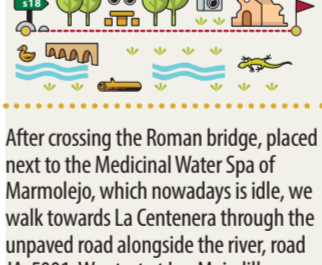
**MEDIUM DIFFICULTY**  
2:40 h  
9.5 km

forest and, further ahead, a granite landscape. It becomes more rugged as we walk and find a huge diversity of Mediterranean scrub, until we arrive at the Jándula Reservoir. It is a good path to observe the wildlife.

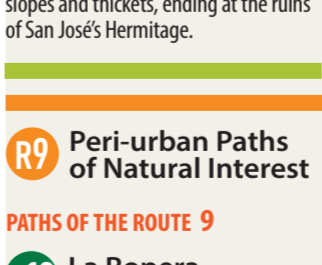
## S16 La Centenera



**LOW DIFFICULTY**  
2:30 min  
6.7 km



**LOW DIFFICULTY**  
2:30 min  
6.7 km



**LOW DIFFICULTY**  
2:30 min  
6.7 km

After crossing the Roman bridge, placed next to the Medicinal Water Spa of Marmolejo, which nowadays is idle, we walk towards La Centenera through the unpaved road alongside the river, road JA-5001. We start at Las Majadillas, where we can find a viewpoint and a Recreational area. We climb onto La Centenera and cross the stream Bahondillo. We climb among steep slopes and thickets, ending at the ruins of San José's Hermitage.

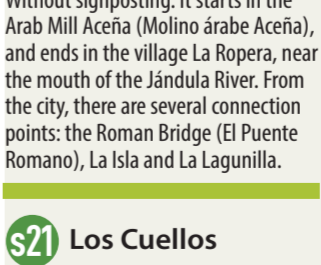
## S17 Mirador del Rey (King's Viewpoint)



**LOW DIFFICULTY**  
1:10 min  
2.17 km



**LOW DIFFICULTY**  
1:10 min  
2.17 km



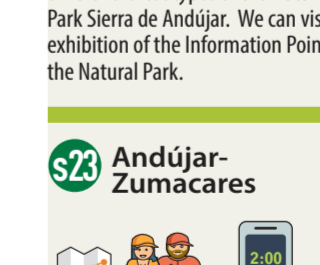
**LOW DIFFICULTY**  
1:10 min  
2.17 km

From La Lancha settlement, we take the sandy path to Access the Jándula Reservoir and we reach its end. There, a brief path starts in the left bank in whose last stretch we find a left climb among pines and scrubs. At the end, we can take pleasure in the awesome views of the surroundings and the dam (Place of Cultural Interest) included in the General Catalogue of the Andalusian Historical Heritage.

## S18 Guadaluquiv's riverside (Ribera del Guadalquivir, Andújar)



**LOW DIFFICULTY**  
3:00 min  
10 km



**LOW DIFFICULTY**  
3:00 min  
10 km



**LOW DIFFICULTY**  
3:00 min  
10 km

Without signposting. It starts in the Arab Mill Aceña (Molino árabe Aceña), and ends in the village La Ropera, near the mouth of the Jándula River. From the city, there are several connection points: the Roman Bridge (El Puente Romano), La Isla and La Lagunilla.

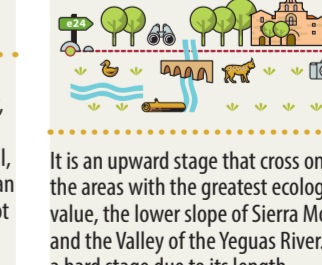
## S19 Peri-urban Paths of Natural Interest



**MEDIUM DIFFICULTY**  
2:00 h  
17 km



**MEDIUM DIFFICULTY**  
2:00 h  
17 km



**MEDIUM DIFFICULTY**  
2:00 h  
17 km

It is a semiurban tour located close to the city. We enjoy a tour around the different forest types of the Natural Park Sierra de Andújar. We can visit the exhibition of the Information Point of the Natural Park.

## S20 Los Escoriales



**MEDIUM DIFFICULTY**  
2:00 h  
17 km



**MEDIUM DIFFICULTY**  
2:00 h  
17 km



**MEDIUM DIFFICULTY**  
2:00 h  
17 km



**MEDIUM DIFFICULTY**  
2:00 h  
17 km



**MEDIUM DIFFICULTY**  
2:00 h  
17 km



**MEDIUM DIFFICULTY**  
2:00 h  
17 km



**MEDIUM DIFFICULTY**  
2:00 h  
17 km



**MEDIUM DIFFICULTY**  
2:00 h  
17 km



**MEDIUM DIFFICULTY**  
2:00 h  
17 km



**MEDIUM DIFFICULTY**  
2:00 h  
17 km



**MEDIUM DIFFICULTY**  
2:00 h  
17 km



**MEDIUM DIFFICULTY**  
2:00 h  
17 km



**MEDIUM DIFFICULTY**  
2:00 h  
17 km



**MEDIUM DIFFICULTY**  
2:00 h  
17 km



**MEDIUM DIFFICULTY**  
2:00 h  
17 km



**MEDIUM DIFFICULTY**  
2:00 h  
17 km



**MEDIUM DIFFICULTY**  
2:00 h  
17 km



**MEDIUM DIFFICULTY**  
2:00 h  
17 km



**MEDIUM DIFFICULTY**  
2:00 h  
17 km



**MEDIUM DIFFICULTY**  
2:00 h  
17 km



**MEDIUM DIFFICULTY**  
2:00 h  
17 km



**MEDIUM DIFFICULTY**  
2:00 h  
17 km



**MEDIUM DIFFICULTY**  
2:00 h  
17 km



**MEDIUM DIFFICULTY**  
2:00 h  
17 km



**MEDIUM DIFFICULTY**  
2:00 h  
17 km



**MEDIUM DIFFICULTY**  
2:00 h  
17 km



**MEDIUM DIFFICULTY**  
2:00 h  
17 km



**MEDIUM DIFFICULTY**  
2:00 h  
17 km



**MEDIUM DIFFICULTY**  
2:00 h  
17 km



**MEDIUM DIFFICULTY**  
2:00 h  
17 km



**MEDIUM DIFFICULTY**  
2:00 h  
17 km



**MEDIUM DIFFICULTY**  
2:00 h  
17 km



**MEDIUM DIFFICULTY**  
2:00 h  
17 km



**MEDIUM DIFFICULTY**  
2:00 h  
17 km